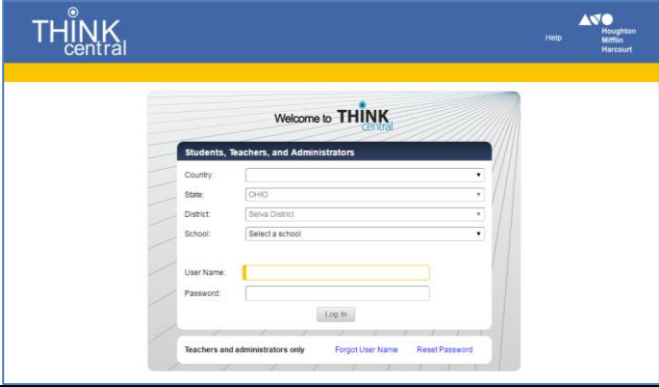
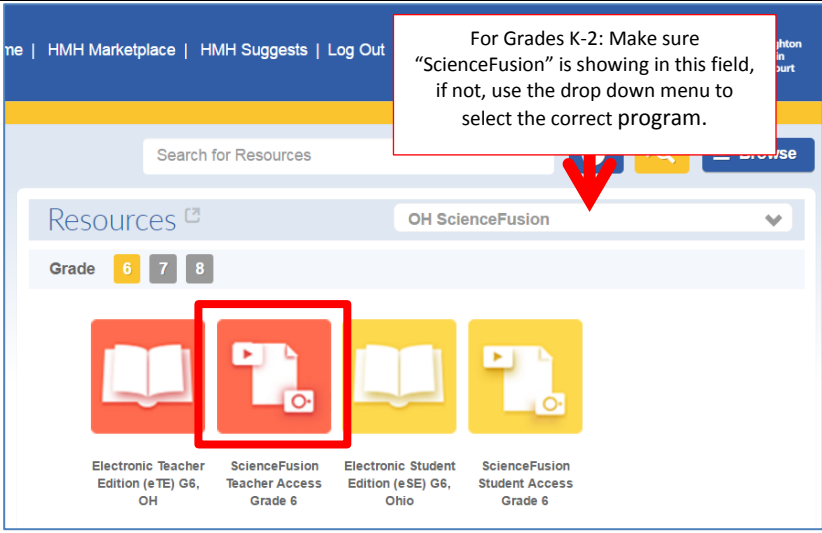
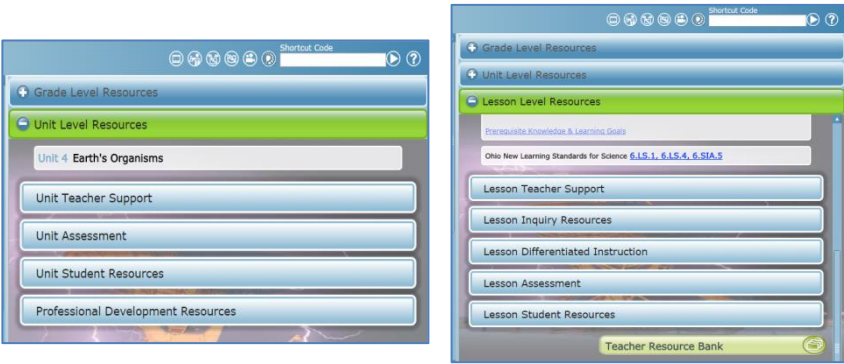
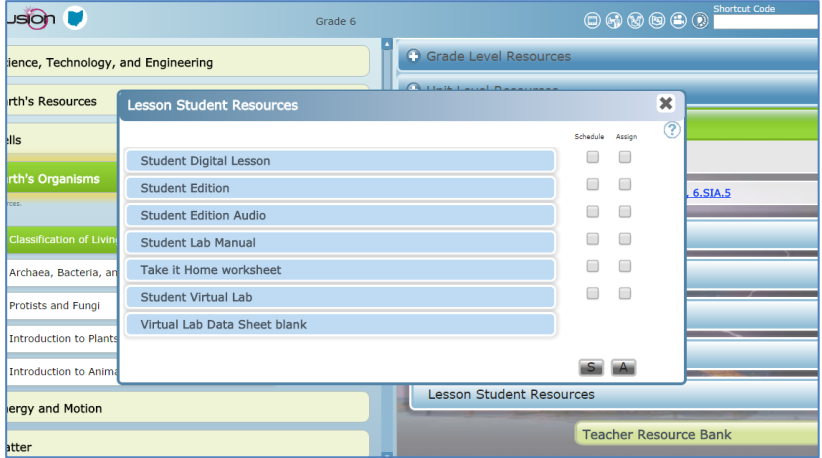
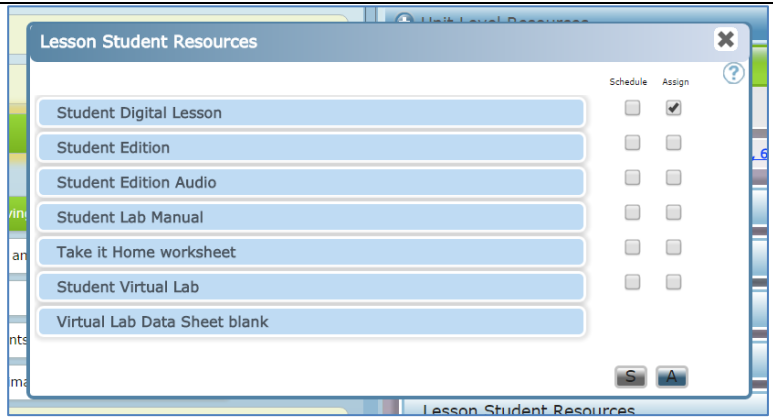


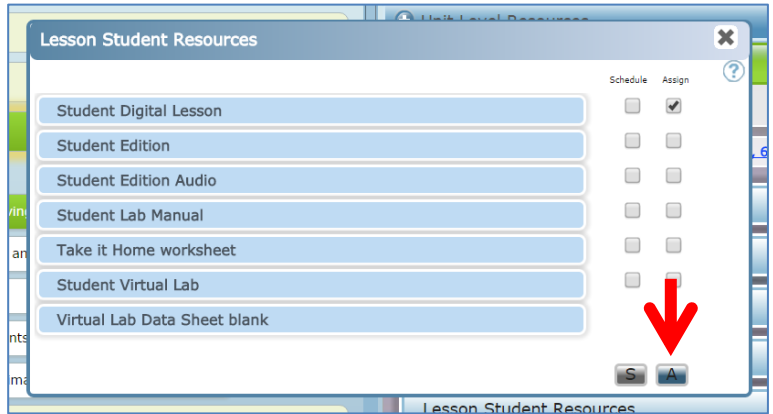
## Creating Assignments in Ohio Science Fusion

<p>1. Login to Think Central at <a href="http://www-k6.thinkcentral.com">www-k6.thinkcentral.com</a></p>	
<p>2. For Grades 3-8: Click on the second red icon "ScienceFusion Teacher Access Grade X"</p> <p>(For Grades K-2: Make sure you are on the Dashboard page for "ScienceFusion" and look for the blue icon labeled: "ScienceFusion Teacher Access Grade X")</p>	
<p>3. Navigate to the Unit and/or Lesson housing the assignment to be created.</p> <p>Assignable content can be found in the Unit Assessment, Unit Student Resources, Lesson Assessment, and Lesson Student Resources.</p> <p>For Grades 3-5 additional assignable content is also found under Lesson Inquiry Resources and Lesson Differentiated Instruction</p>	
<p>4. Expand the area featuring the resource to be assigned by clicking on the option.</p>	

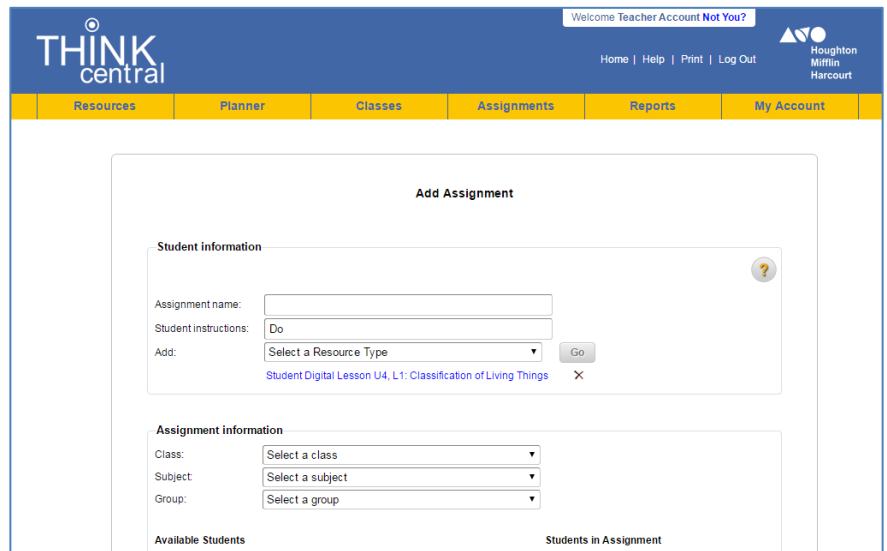
5. Check the box next to the resource to be assigned.



6. Click on the blue "A" at the bottom of the Assignment column.



7. A Think Central assignment screen opens. NOTE: Often this screen opens behind the Teacher Access Screen



8. Fill in assignment information and click the "Save" button at the bottom of the screen. An assignment name must be entered, a class selected, and a start and end date selected.

For ungraded/completion only assignments (Digital Lessons, Virtual Labs, reading assignments, leveled readers, differentiated instruction resources, vocabulary cards, etc.) a subject must also be selected.

NOTE: Not all students need to be added to each assignment. Student assignments can be differentiated by selecting certain students for each assignment

**Add Assignment**

**Student information**

Assignment name: Sample Assignment  
Student instructions: Do  
Add: Select a Resource Type   
Student Digital Lesson U4, L1: Classification of Living Things

**Assignment information**

Class: Northwest Local Sample Class  
Subject: Science  
Group: Select a group

**Available Students**

**Students in Assignment**

Einstein, Albert  
Fermi, Enrico  
Newton, Isaac

Available date: 09/14/16   
Due date: 09/21/16   
Times Available: Any Time  
From: AM To: AM

9. For Assessment Assignments: Think Central offers the ability to provide a remediation path for students who do not meet the standards mastery threshold for a specific standard. A follow-up assessment can also be assigned automatically. These features do not need to be enabled, but the option exists.

**Assessment Settings**

**Taking the Assessments**

Password to access the assessment:   
Allow students to pause the assessments:  Yes  No  
Allow students to see their answers:  Yes  No  
Sections and Questions: 1 of 1 sections included

**Viewing Results:**

Standard set: Ohio New Learning Standards for Science  
Mastery Level: 75%

**Automated Prescriptions**

Automatically assign prescriptions after the assessment?  Yes  No

**Follow-Up Assessment**

Automatically assign the follow up assessment?  
 No  
 Assign an individually customized follow up

**Settings:**

Assignment name: Follow up Assessment  
Available date: 09/22/16   
Due date: 09/29/16

**Note:** When setting a due date, take account of the Automated Prescriptions process and timelines.